



INSTALLATION INSTRUCTIONS

[CARBAHN.COM/INSTRUCTIONS](https://carbahn.com/instructions)

2/3/4 Series (Non M) & Z4

CARBAHN PART #:

CBB12-20-4600



US Based Support

866-558-4314

Sales@CarBahn.com

CarBahn.com

Follow Us: [@CarBahnOfficial](https://twitter.com/CarBahnOfficial)

These instructions assume that the person installing these parts is a *BRAND CERTIFIED MECHANIC* and are *NOT* step by step instructions on how to disassemble and reassemble the car.

1. You will begin by following factory BMW procedures to remove both the driver and passenger side front caster arms.
2. With driver and passenger side caster arms out of the car, you will proceed to press out the factory rubber bushings from both arms. **Use the appropriate adapters and press to remove OEM bushings.**



3. Once factory bushings have been pressed out of the arms, start the assembly process by removing the bolts and the monoball hat and set them aside for later use.



These instructions assume that the person installing these parts is a *BRAND CERTIFIED MECHANIC* and are *NOT step by step instructions on how to disassemble and reassemble the car.*

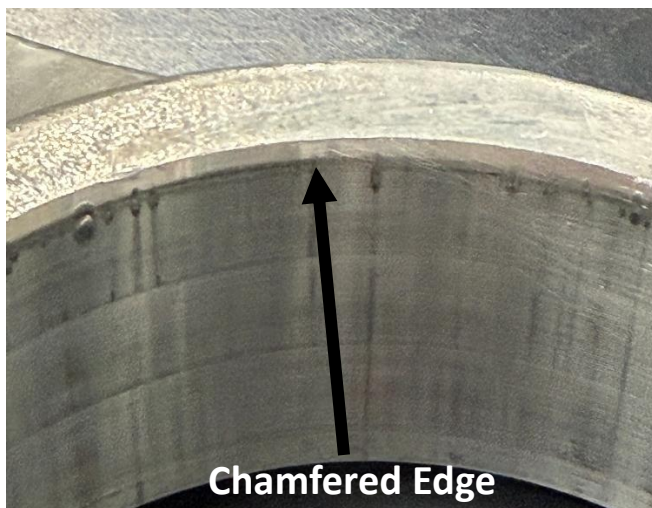
4. With hats and bolts removed, proceed with applying the provided Loctite 680 on the mating surfaces of on both housings. Spread evenly as shown in the images below, ensure there is as thin a layer as you can get with no dry spots on the mating surface.



5. After Loctite has been applied, proceed with pressing the bodies into the caster arms, pressing them into the side of the arm that is chamfered.

Note: Never press on monoball directly, you must use a press tool that only presses on the housing, pressing on the monoball will damage it and will void the warranty.

Make sure that the housing is pressing into the arm square and is not at an angle. If excessive pressure is required, **STOP** immediately and double check it is square in the bore of the arm before proceeding.



These instructions assume that the person installing these parts is a *BRAND CERTIFIED MECHANIC* and are *NOT step by step instructions on how to disassemble and reassemble the car.*

6. After pressing the monoball housings into both arms, you can now locate the Monoball Hat, and M5 hardware that was removed earlier. Insert the hardware through the monoball housing and thread into the monoball hat, locking the housing into the arm. Torque the M5 hardware on both arms to 95-inch pounds in a crisscross pattern. **Note: After torquing the hardware in a crisscross pattern, go through the torquing sequence one more time.**



7. With the monoball housings fully installed in the arms and you are confident all hardware has been properly torqued to the proper specifications, you can proceed to reinstall the driver and passenger side caster arms per BMW factory procedures using the supplied spacers.



These instructions assume that the person installing these parts is a *BRAND CERTIFIED MECHANIC* and are *NOT step by step instructions on how to disassemble and reassemble the car.*

8. Finally, after installation is completed, an alignment must be performed.