



# INSTALLATION INSTRUCTIONS

[CARBAHN.COM/INSTRUCTIONS](https://CARBAHN.COM/INSTRUCTIONS)

**MONOBALL KIT | BMW G9X M5**

**&**

**G30 5 Series**

**CARBAHN PART #:**

**CBB12-90-1410**



**US Based Support**

**866-558-4314**

**Sales@CarBahn.com**

**CarBahn.com**

**Follow Us: @CarBahnOfficial**

**These instructions assume that the person installing these parts is a *BRAND CERTIFIED MECHANIC* and are *NOT step by step instructions on how to disassemble and reassemble the car.***

1. You will begin by following factory BMW procedures to remove both the driver and passenger side front caster arms.
2. With driver and passenger side caster arms out of the car, you will proceed with pressing out the factory rubber bushings from both arms. **Use the appropriate adapters when pressing out the OEM Bushings.**

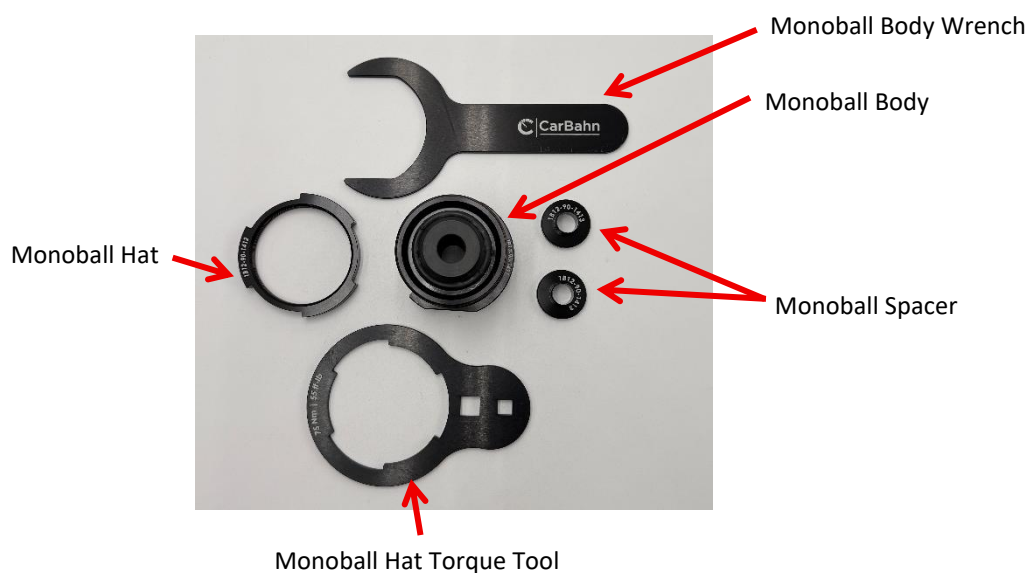


G9X Caster Arm



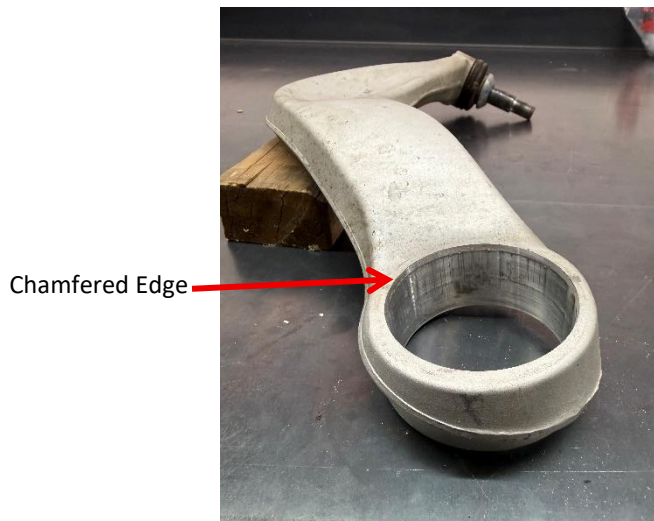
G30 Caster Arm

3. Once factory bushings have been pressed out of the arms, start the assembly process by removing the Monoball hat and set it aside for later use.



**These instructions assume that the person installing these parts is a *BRAND CERTIFIED MECHANIC* and are *NOT step by step instructions on how to disassemble and reassemble the car.***

4. You will now want to check the bore of both control arms for any imperfections caused when pressing the control arm out. If you feel any imperfections (metal sticking up/ not smooth), use some sandpaper to remove imperfections. **Do not excessive sand to the point you are changing the dimension of the bore.**



5. With both arms now clean of any defects you are ready to install the Monoball Body. For the G9X M5 Arms you will want to install them on the side that has a chamfer. For the G30 5 Series Models you will want to install them on the side with the arrow. Making sure the arrow on the arm lines up with the arrow on the Monoball Body.

You should be able to install them without a press, by lining them up straight and wiggling them in. However, if you cannot install them without a press, check for any defect in the bore. If there are none, you can press the body in gently, making sure it is lined up straight and not using excessive force and possibly heating the arms. **Pressing them in misaligned will Damage the threads of the body and will prevent you from being able to install them.**



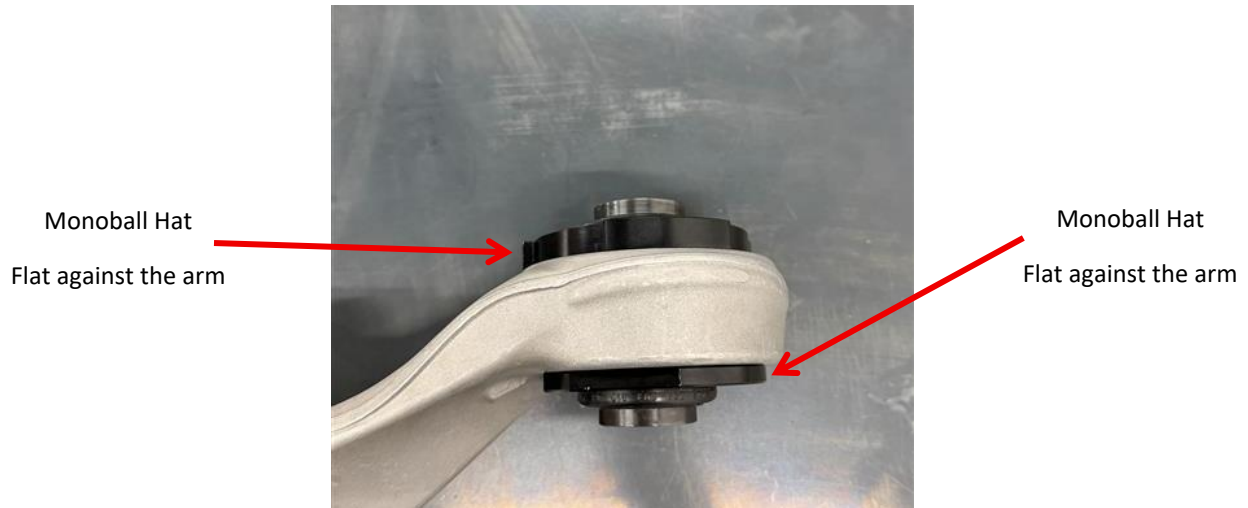
G3X Caster Arm with lined up arrows



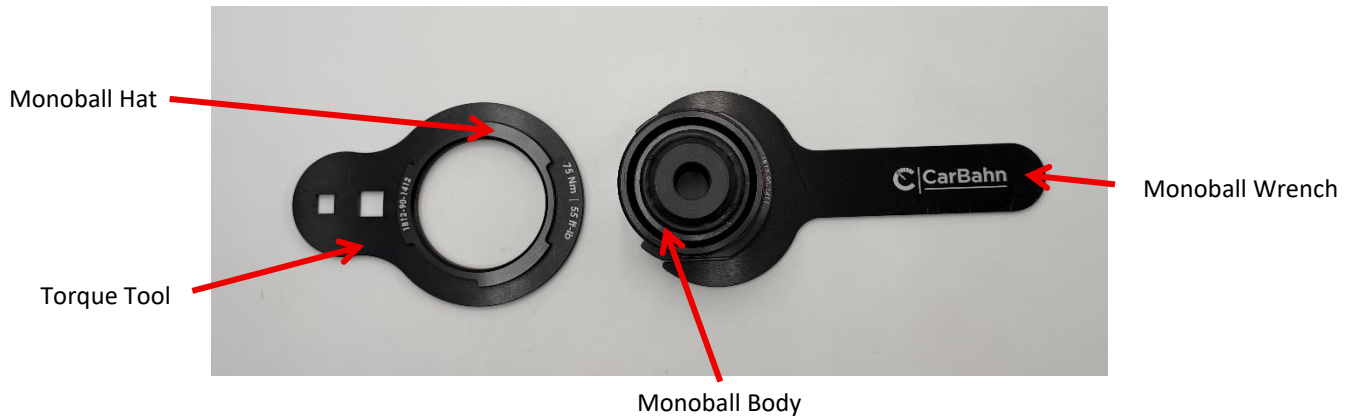
G9X Caster Arm

**These instructions assume that the person installing these parts is a *BRAND CERTIFIED MECHANIC* and are *NOT step by step instructions on how to disassemble and reassemble the car.***

6. After installing the Monoball bodies into the arms, you can locate your Monoball Hat. You will thread the Monoball hat on the exposed threads of the body. Begin by threading them all the way in by hand, ensuring the Monoball Body is flat against the arm, or the arrows are lined up for the Non M5 caster arm.



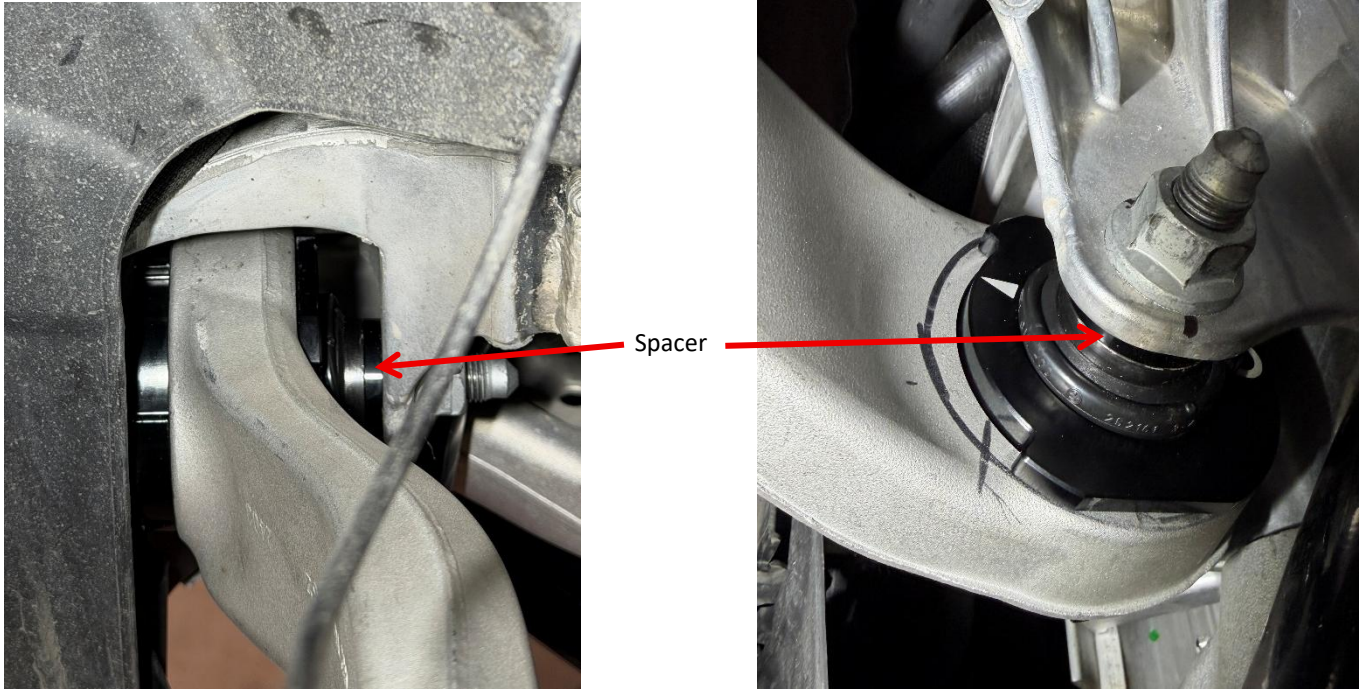
7. With the Monoball hats fully tightened up by hand you are ready to torque them down. For this you will use a Torque wrench and the provided Torque tool / Wrench. Placing the arm in a vice might help you to properly torque the hat. You will be torquing it to 75Nm / 55 ft-lbs.



You will use the Wrench to hold the Monoball in position while torquing it with the torque tool. For the G30 caster arm, ensure the arrows are lined while torquing the hat.

**These instructions assume that the person installing these parts is a *BRAND CERTIFIED MECHANIC* and are *NOT step by step instructions on how to disassemble and reassemble the car.***

8. With the Monoballs fully installed and torqued onto the Caster arms. You can slide the provided spacer into the Monoball and proceed to reinstall the driver and passenger side arms by following BMW factory procedures.



9. Finally, after installation is completed following BMW factory procedures and torque specs, an alignment must be performed.